

Company Information

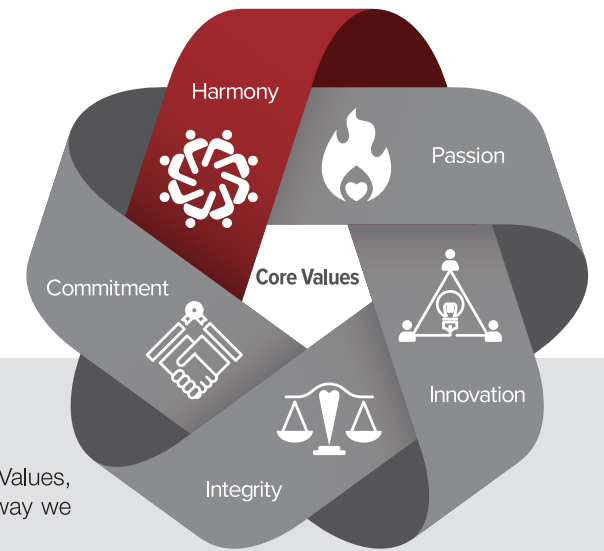
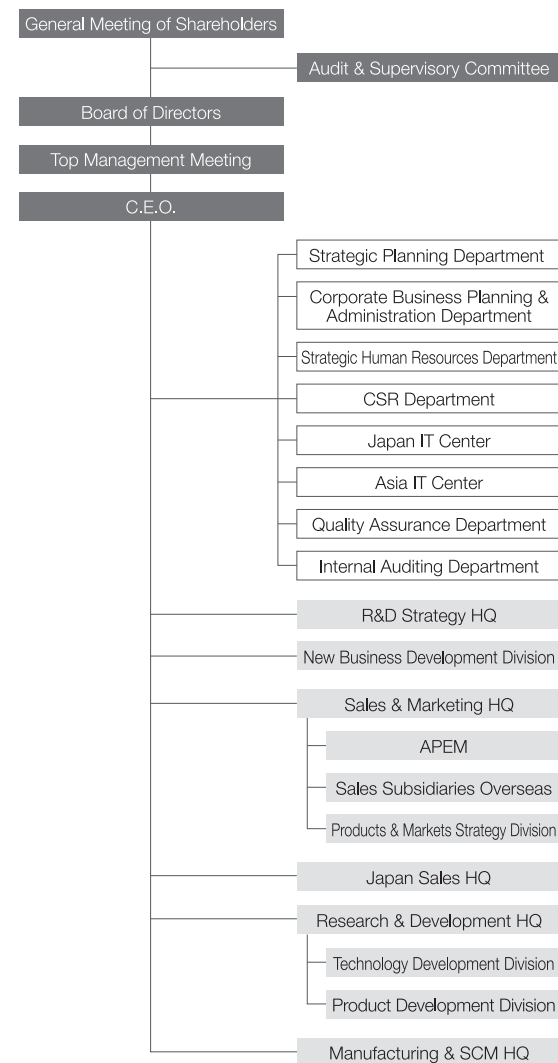
Corporate Data

Corporate Name	IDEC CORPORATION
Established	March 26, 1947
Capital Stock	¥10,056,605,173
No. of Employees	3,654 (On a consolidated basis as of March 31, 2019) Excluding contract and temporary employees
Stock Listing	First Section, Tokyo Stock Exchange
Head Office	2-6-64, Nishi-Miyahara, Yodogawa-ku, Osaka 532-0004 Japan Phone: +81-6-6398-2500 (Main number)
Tokyo Head Office	2-15-1 Konan, Minato-ku, Tokyo 108-6014 Japan Phone: +81-3-5782-7690 (Main number)
Plants	Tsukuba, Amagasaki, Fukusaki, Takino
Sales Branches	Sendai, Takasaki, Omiya, Mito, Tokyo, Tama, Yokohama, Nagano, Niigata, Toyama, Kanazawa, Hamamatsu, Nagoya, Kyoto, Osaka, Okayama, Fukuyama, Hiroshima, Shikoku, Fukuoka
Distribution Center	Tatsuno



Organization Chart

As of April 1, 2019



Our Principles

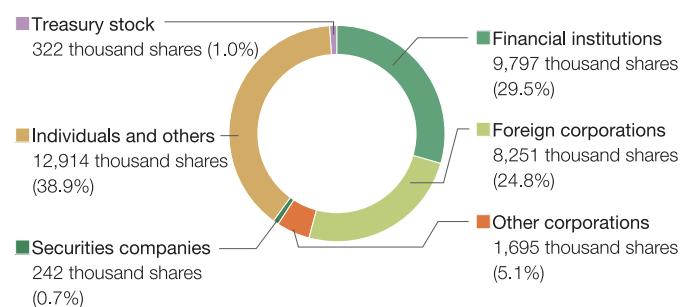
Our Principles, stemmed directly from our Core Values, articulate our unique approach to work, shaping the way we think and act within the company.

<p>Harmony</p>	<p>Customer-Focus We put our customers first in everything we do. We are committed to achieving the highest level of customer satisfaction.</p> <p>Collaborate "None of us is as smart as all of us"—We collaborate together as a team because individually, no one has all the answers.</p> <p>Environmentally Aware We believe that each one of us plays a role and has the responsibility to contribute to society.</p>
<p>Passion</p>	<p>Enjoy We believe that joy inspires us to be our best. We find happiness in our work and celebrate our accomplishments, allowing us to enjoy what we do and have fun doing it.</p> <p>Be Positive We actively promote a positive work environment, and feed off of each other's energy.</p> <p>Have Ambitions We strive to be the best by proactively taking the initiative to learn. Continuous self-improvement and personal growth will help you realize your full potential.</p>
<p>Innovation</p>	<p>Learn from Mistakes Making mistakes doesn't mean failure. Mistakes are fundamental to growth and a chance to learn. However, we never make the same mistakes twice.</p> <p>Embrace Change We take on challenges and embrace change with an open mind. Our own ability to adapt will translate to our company's ability to evolve.</p> <p>Value Differences Our differences and our individuality are our strengths. Diversity in the workplace is the foundation for creativity and new ideas.</p> <p>"Kodawari" We are dedicated to quality, reliability and safety. With our attention to detail and our relentless pursuit of perfection, our products will always exceed the highest industry standards.</p>
<p>Integrity</p>	<p>Be Honest Trust is never given, but earned through our actions. Honesty is essential to building lasting relationships internally, as well as with our customers and stakeholders.</p> <p>Show Respect We should always treat others the way we want to be treated.</p> <p>Do the right thing We act ethically and responsibly in all circumstances. We will follow applicable laws and our rules, and will always be guided by the effort to do the right thing.</p>
<p>Commitment</p>	<p>Walk the Talk We keep ourselves accountable for our actions, and we take pride in what we deliver. We follow through on all of our commitments because we understand that others are dependent on the result of our work.</p> <p>Work Smarter "Work smarter, not harder"—it's not about the hours we've worked, but the value we bring to the hour. We always work with a sense of urgency, whether it's to meet deadlines or to simplify existing processes.</p> <p>Focus 20 "Achieve more by doing less."—We know when to say "no" and prioritize our time, so we can focus on the vital 20% of tasks that are most valuable that lead to high-impact results.</p>

Shares of the Company

Number of shares authorized	150,000,000
Number of shares issued	33,224,485
Number of shareholders	10,037

Distribution of Shareholders



Major Shareholders (Top 10)

As of March 31, 2019

Shareholders	Number of shares (Thousands of shares)	Holdings (%)
Japan Trustee Services Bank, Ltd.	4,868	14.80
JP MORGAN CHASE BANK	2,829	8.60
The Master Trust Bank of Japan, Ltd.	1,984	6.03
STATE STREET BANK AND TRUST COMPANY	1,560	4.74
Funaki Kosan Ltd.	1,041	3.16
Mizuho Bank, Ltd.	812	2.47
Keijiro Fujita	731	2.22
BBH FOR GLOBAL X ROBOTICS AND ARTIFICIAL INTELLIGENCE ETF	683	2.08
THE BANK OF NEW YORK MELLON (INTERNATIONAL) LIMITED	659	2.01
Toshiyuki Funaki	625	1.90

Note: The description of major shareholders above conforms to the content disclosed in the Annual Securities Report.